



Wellesley Road, London, W4 4AD

Guide Price £349,950

WHITMAN & CO.

SALES · LETTINGS · COMMERCIAL

- Period conversion flat
- Semi-open plan kitchen/reception room
- Close to numerous amenities
- Bright triple aspect
- Double bedroom with fitted wardrobes
- No onward chain

Tenure - Leasehold
 Lease length - 125 years remaining
 Ground Rent - £150 pa
 Service Charge - £590 pa
 Local Authority - Hounslow
 Council Tax - Band D

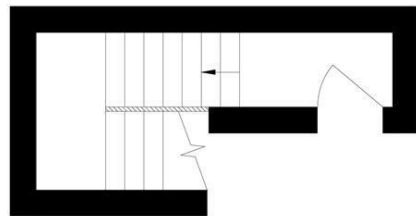
THE PROPERTY

A well-presented top-floor triple aspect apartment which is flooded with light and in a super location, a few minutes walk from Chiswick High Road, Gunnersbury and Kew Bridge stations, local pubs and Strand on the Green riverside. The accommodation comprises a dual aspect semi-open kitchen/reception room, a double bedroom with fitted wardrobes, bathroom, entrance hallway and landing areas and ample storage. Chiswick High Road's shops, cafes and restaurants are a short walk away, as is Chiswick Business Park. Strand on the Green riverside has a lovely towpath walk with a great selection of pubs. As well as Gunnersbury and Kew Bridge stations, there are numerous local bus routes and easy access to the A4/M4 for routes in and out of London. Offered for sale with no onward chain.

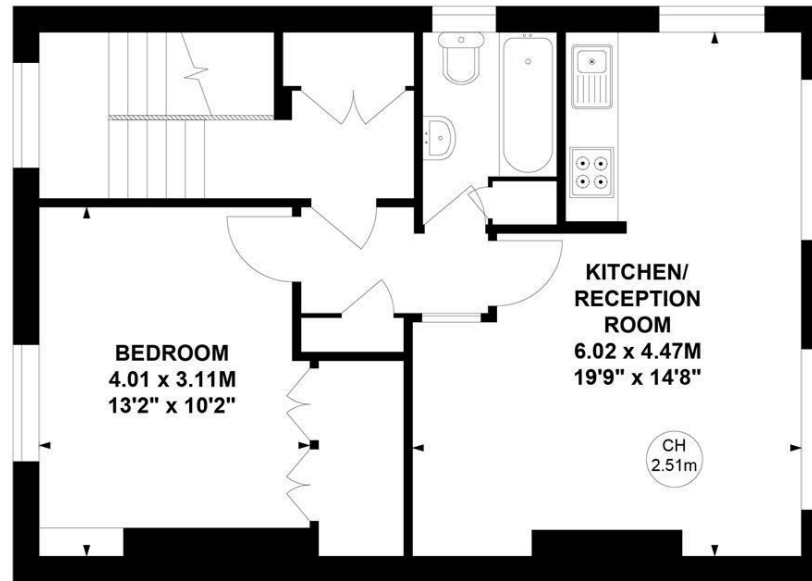
Wellesley Road, W4

Approximate Gross Internal Area
57.95 sq m / 624 sq ft

Key :
CH - Ceiling Height



First Floor



Second Floor

Not to scale, for guidance only and must not be relied upon as a statement of fact.
 All measurements and areas are approximate only

SITUATION



5-7 Turnham Green Terrace, Chiswick, London, W4 1RG

Tel 020 8747 8800

E-mail sales@whitmanandco.com

Website www.whitmanandco.com